

TECHNICAL DATA

Vertical TESTING- and SPOTTING PRESS in 4-column design

manufacturer	REIS ROBOTICS
Type	TUS130-200
control	Simatic C7-635 SPS
built	2016



Working area

Passage between columns	1.360	mm
Max. mold height	1.700	mm
Clamping surface	1.300 x 1.600	mm
Pressing force	2.000	kN
Stroke of ram (vertically)	1.800	mm
Travel of tilting table (horizontally)	1.700	mm
Max. load on tilting plate	60	kN

Clamping tables

Max. load of swing plate	6.000	kg
Max. load of tilting table ((tilted)	7.500	kg
Number and spacing of T-slots	3 x 125	mm
Size and shape of T-slots	Gr. 22	DIN 650
Max. mold weight	12.000	kg

Ejector in the working table

Max. ejector force	56	kN
Ø of the ejector	55	mm
stroke	160	mm

The force of the ejector cylinder is infinitely variable

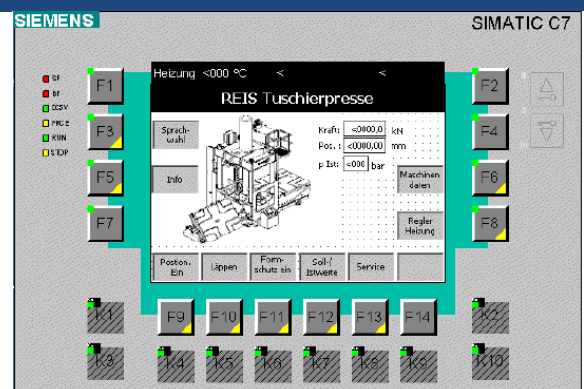
Traversing speeds

Closing speed	50	mm/s
Opening speed	50	mm/s
Carriage speed	200	mm/s
Swivelling speed	180	mm/s
Tilting speed	100	mm/s

Control SIEMENS Simatic C7-635

General description

- Basic menu
- Language selection
- Display of setpoint/actual values
- Service menu
- Parameters
- Teach-In
- Positioning
- Lapping
- Shape protection (option)
- Service functions



Dimension, weight, connected load

Required space (Length x width x height)	4,9 x 2,8 x 5,6	m
Weight approx.	19.000	kg
Total connected load	23	KVA
Nominal current	63	A
Operating voltage	400	V
Frequency	50	Hz

Equipment

- Basic machine
- 4-column guide Ø 160mm
- Hydraulic system, tank capacity 475l
- Ram hold-up device
- 180° swivelling device
- Positioning control with digital measuring device, measuring length 2.000mm
- Press force increased to 2.000kN
- Ejector, centrally arranged in the table, stroke 160mm
- Tilting table +/- 60°
- 2 control nits for cylinders/hydraulic core pulls (2 circuits)
- The pressure of the circuits is infinitely variable. It is displayed digitally
- Installation height extended by 300mm
- Drainage curve for swing plate
- Control panel with operating panel, touch display and machine control panel
- Control cabinet
- Machine lights for optimum illumination of the extended mold halves
- Safety guard with safety doors
- Injection unit can be retrofitted